

**NAT
4 / 5**

**PRACTICAL
WOODWORKING
COURSE SUPPORT**

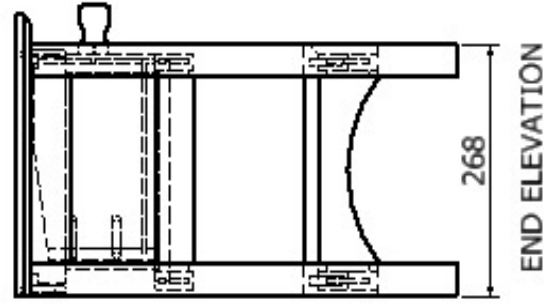
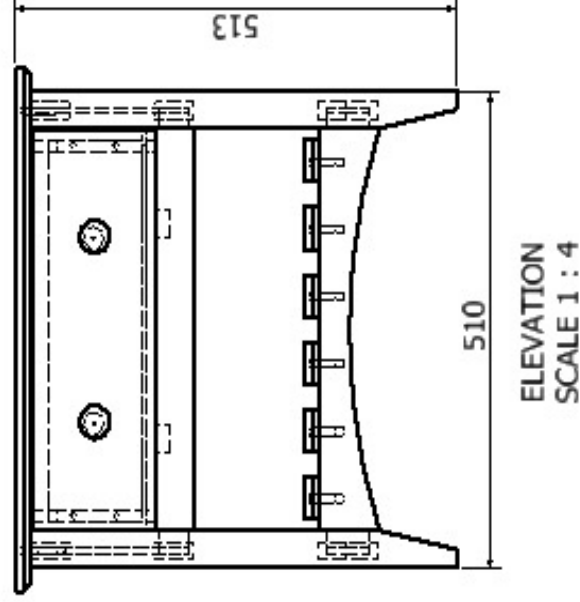
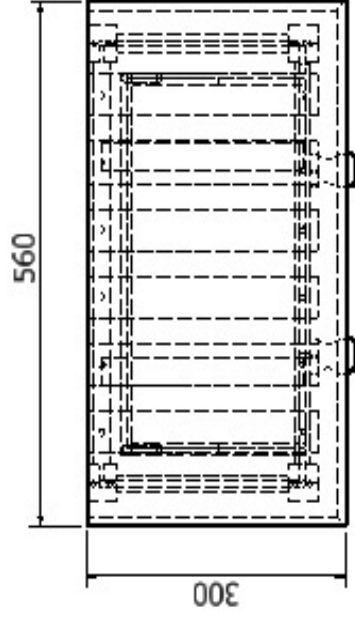


**WOODWORKING
HALL UNIT**



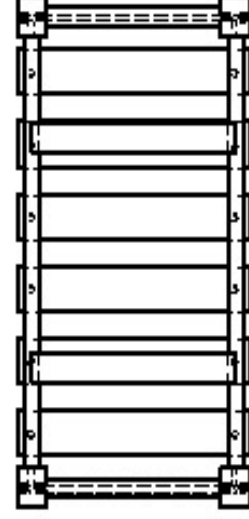
**FLAT FRAME
CONSTRUCTION**

ASSEMBLED ORTHOGRAPHIC

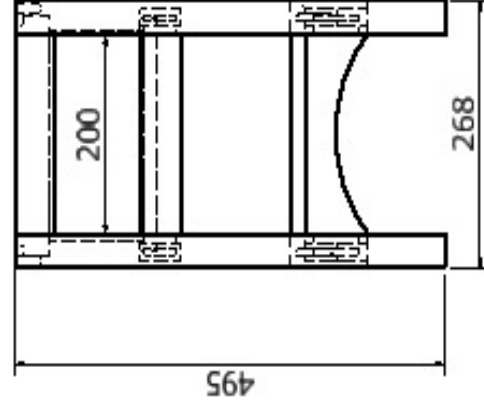


Flat Frame Construction

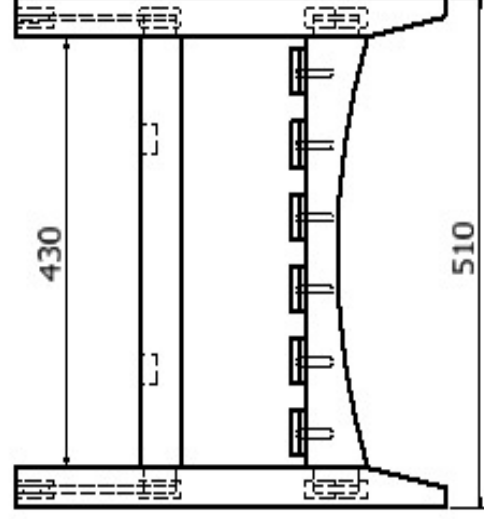
ASSEMBLED FRAME ORTHOGRAPHIC



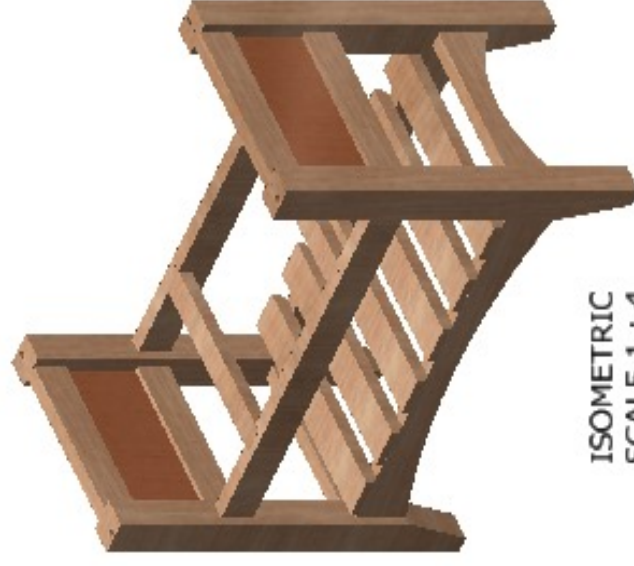
PLAN



END ELEVATION



ELEVATION
SCALE 1 : 4



ISOMETRIC
SCALE 1 : 4

Flat Frame Construction

EXPLODED ISOMETRIC FRAME

SCALE 1 / 4



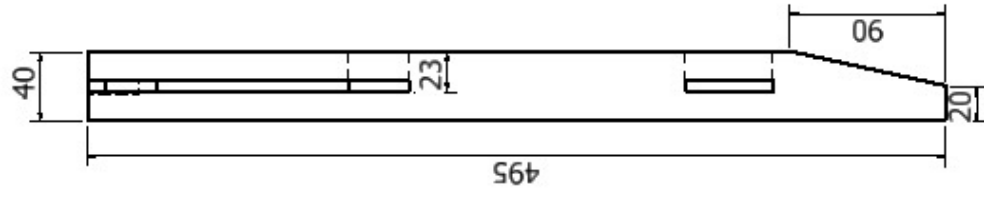
PARTS LIST					
ITEM	QTY	PART NUMBER	LENGTH	BREADTH	THICKNESS
1	2	leg	495 mm	40 mm	34 mm
2	2	Lower Side Rail	240 mm	70 mm	18 mm
3	2	Side Panel	210 mm	110 mm	6 mm
4	2	Upper Haunch Side Rail	240 mm	45 mm	18 mm
5	2	Mid Side Rail	240 mm	45 mm	18 mm
6	2	Leg 2	495 mm	40 mm	34 mm
7	2	Drawer Runner	234 mm	30 mm	18 mm
8	2	Lower Rail	476 mm	70 mm	18 mm
9	2	Upper Rail	476 mm	45 mm	18 mm

Flat Frame Construction LEG 1 AND 2

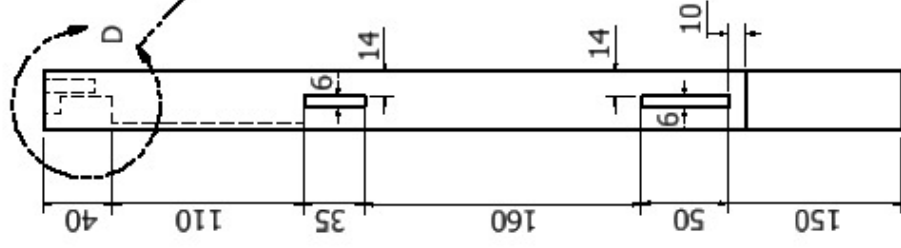


ISOMETRIC
SCALE 1 : 2

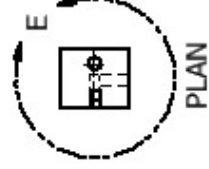
LEG 1 AND 2 ARE
MIRROR IMAGES
OF EACH OTHER
THEREFORE
DIMENSIONS ARE
THE SAME.



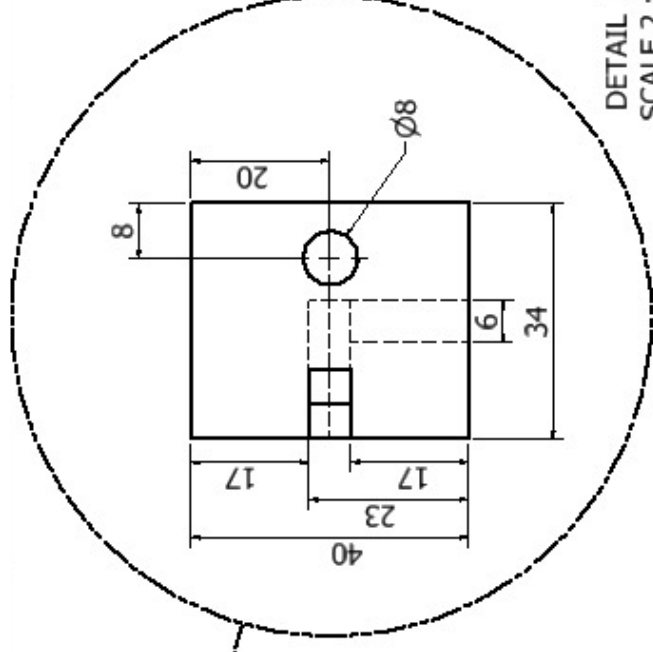
END ELEVATION



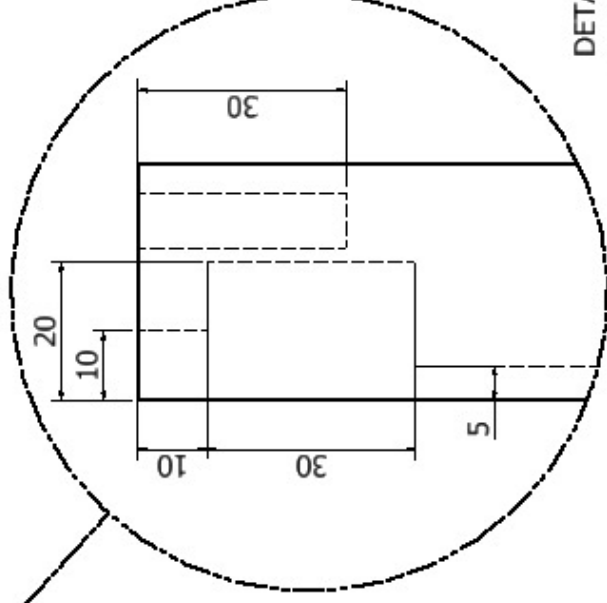
ELEVATION
SCALE 1 : 2



PLAN



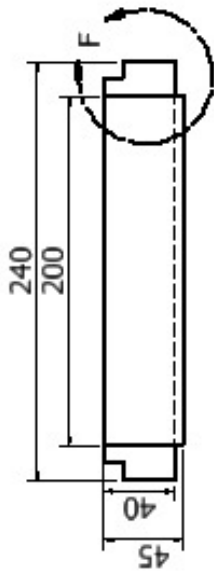
DETAIL E
SCALE 2 : 1



DETAIL D
SCALE 2 : 1

Flat Frame Construction

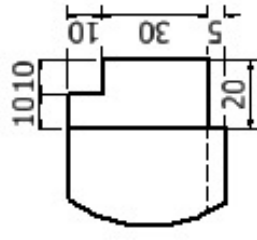
Upper Side Haunched Rail



ELEVATION
SCALE 1 : 2

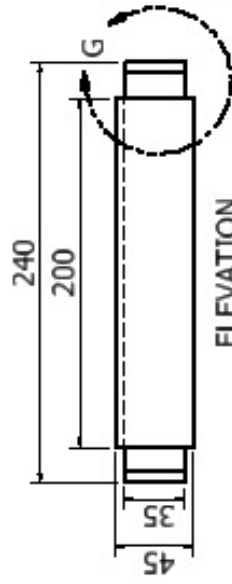


END ELEVATION

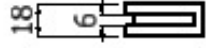


DETAIL F
SCALE 1 : 1

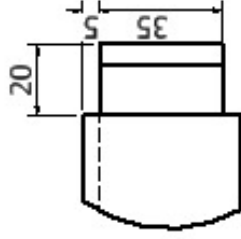
Mid Side Rail



ELEVATION
SCALE 1 : 2

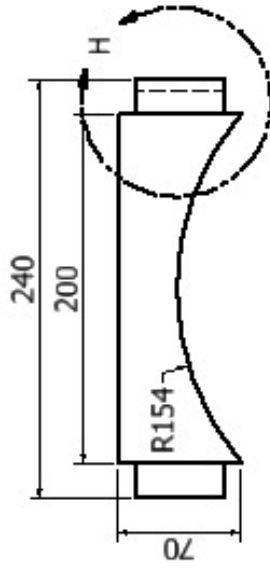


END ELEVATION



DETAIL G
SCALE 1 : 1

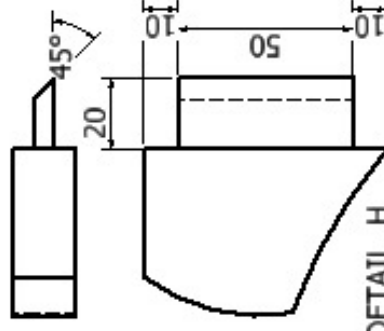
Lower Side Rail



ELEVATION



END ELEVATION

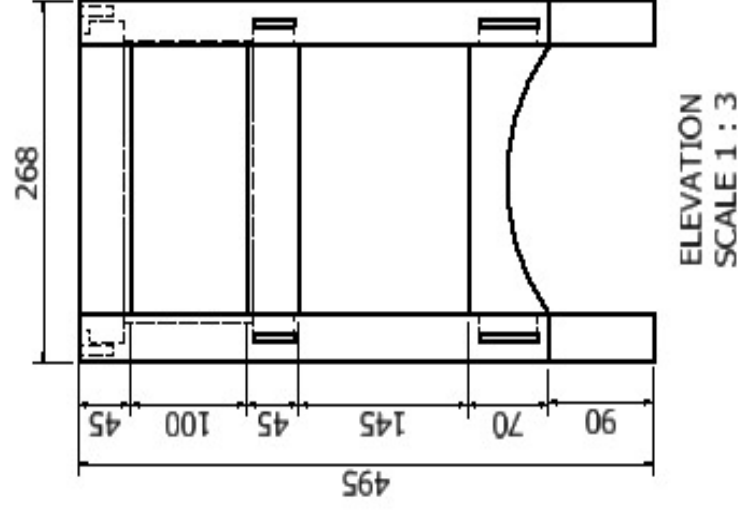
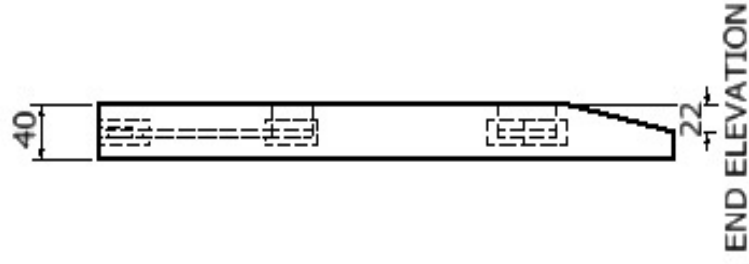
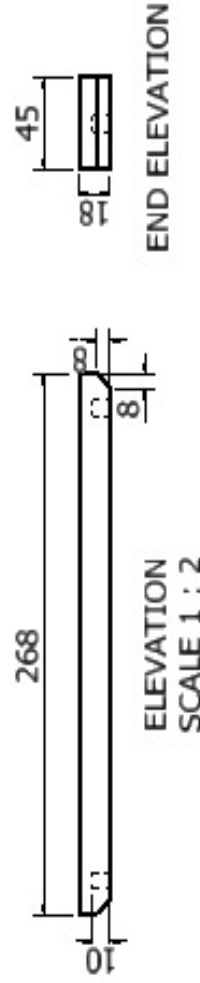
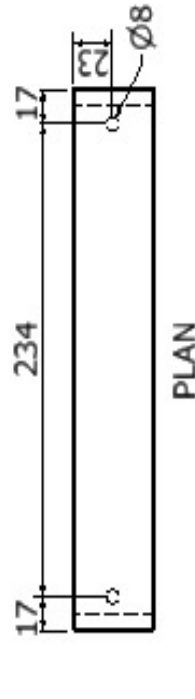


DETAIL H
SCALE 1 : 1

Inside edge of tenons to be chamfered at 45 degree angle to prevent interference.

Flat Frame Construction

Shelf



Side Assembly



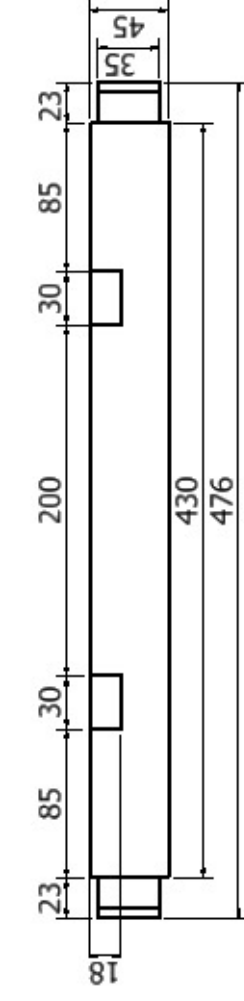
Flat Frame Construction

Upper Rail

Inside edge of tenons to be chamfered at 45 degree angle to prevent interference.

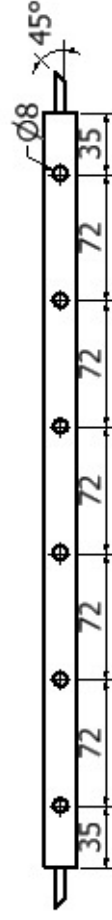


PLAN

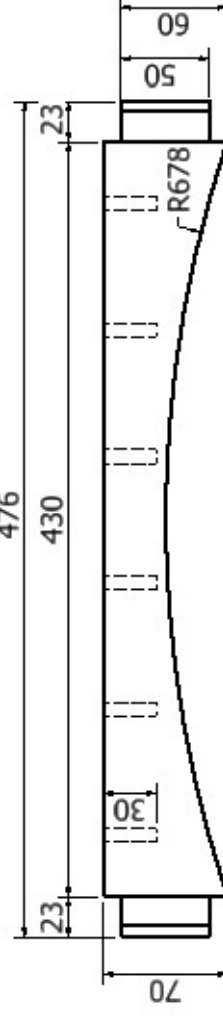


END ELEVATION

Lower Rail



PLAN
476



Arc must not interfere with blind holes for dowels.

END ELEVATION